

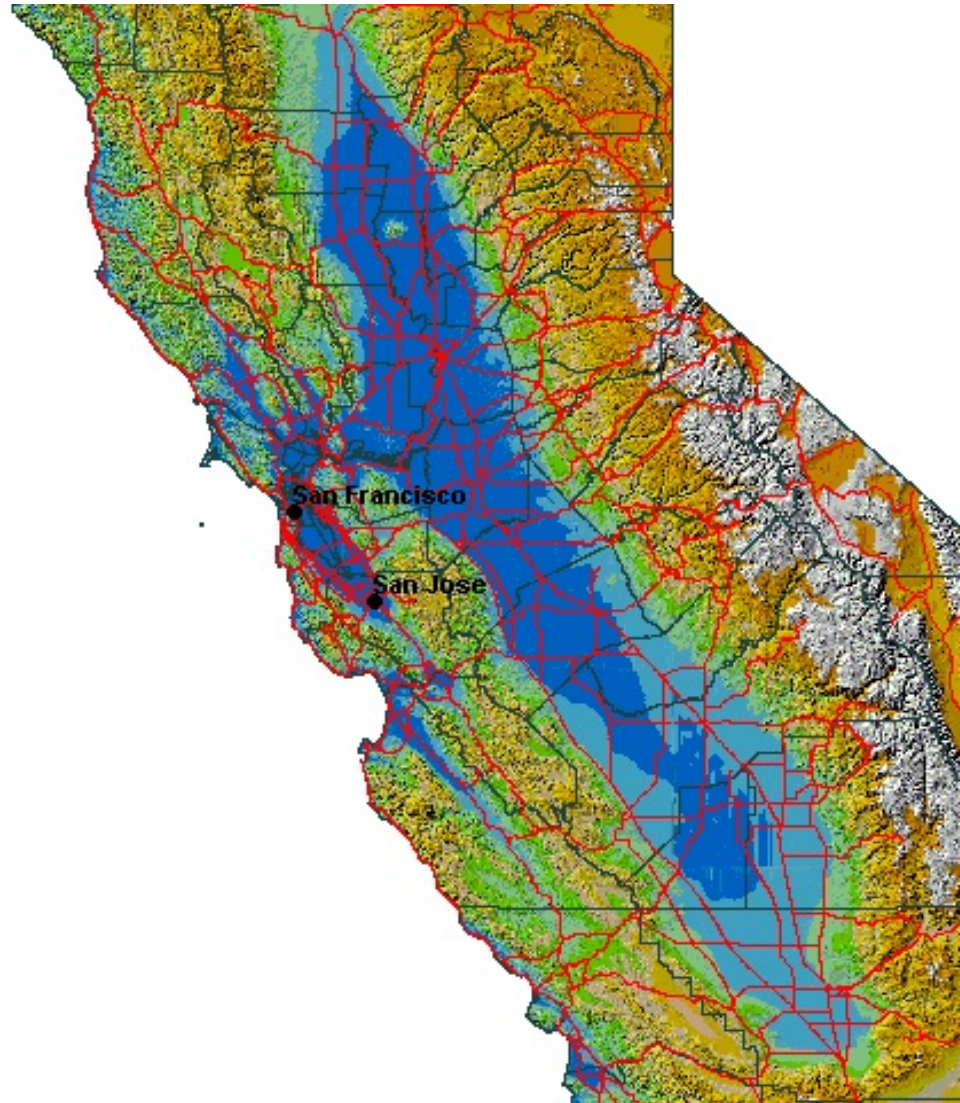
Climate Smart Approach to Adaptive Management in the Central Valley

Central Valley Landscape Conservation Project

Welcome!
to the
First Workshop
on the
CV Landscape Conservation Project

October 7, 2014

Debra Schlafmann
CA LCC Coordinator

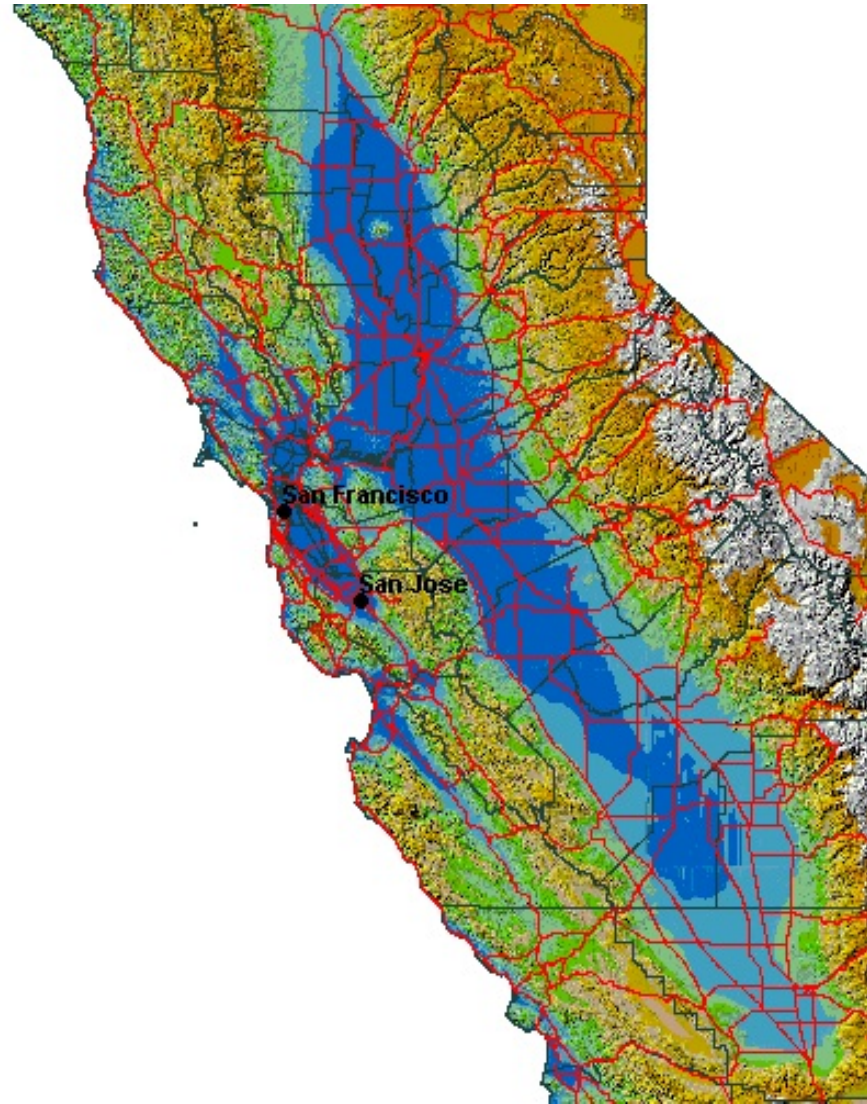


Addressing climate change in the Central Valley

Central Valley Landscape Conservation Project

Longterm, place-based strategies developed by partners will lead to:

- Shared goals and objectives for Central Valley
- Adaptation actions that complement each other
- Shared resources
- Application of lessons learned to existing & future efforts

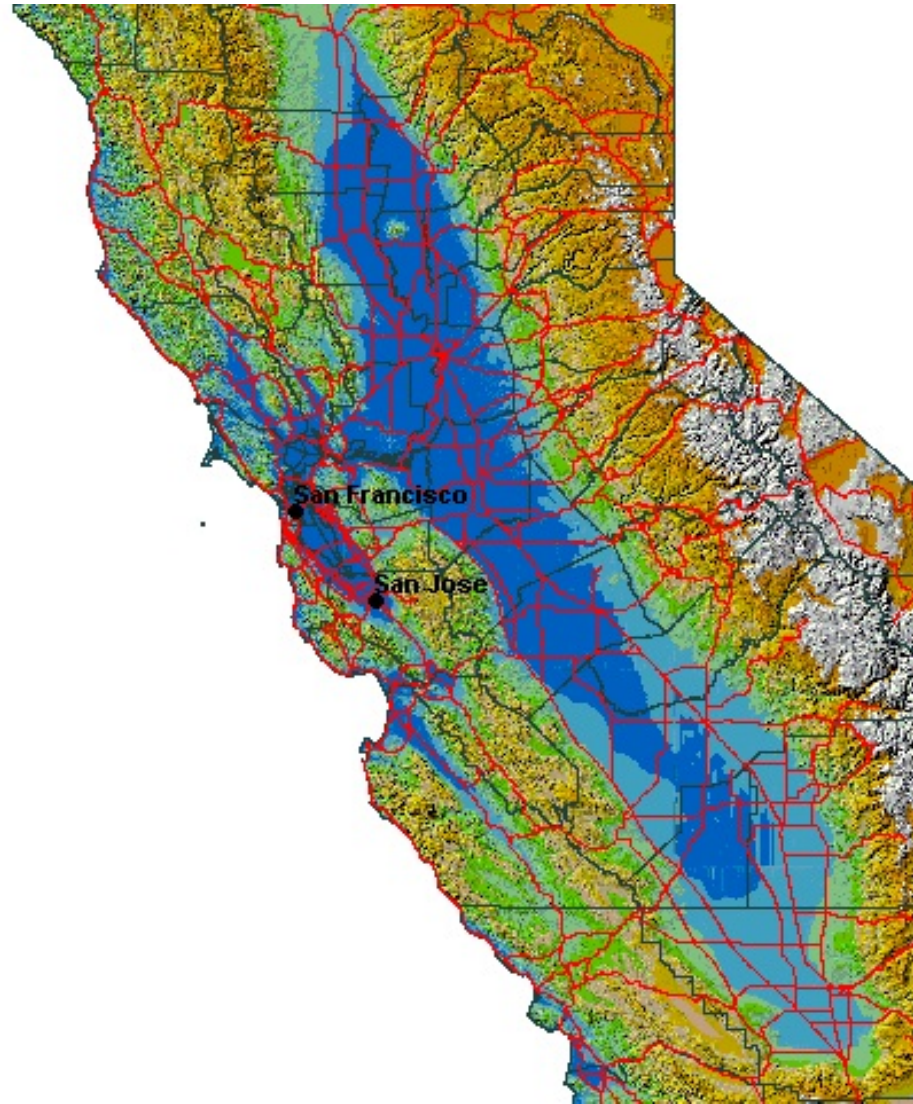


Addressing climate change in the Central Valley

Central Valley Landscape Conservation Project

Longterm, place-based strategies developed by partners will address:

- Management Decisions
- Restoration & protection
- Research & monitoring

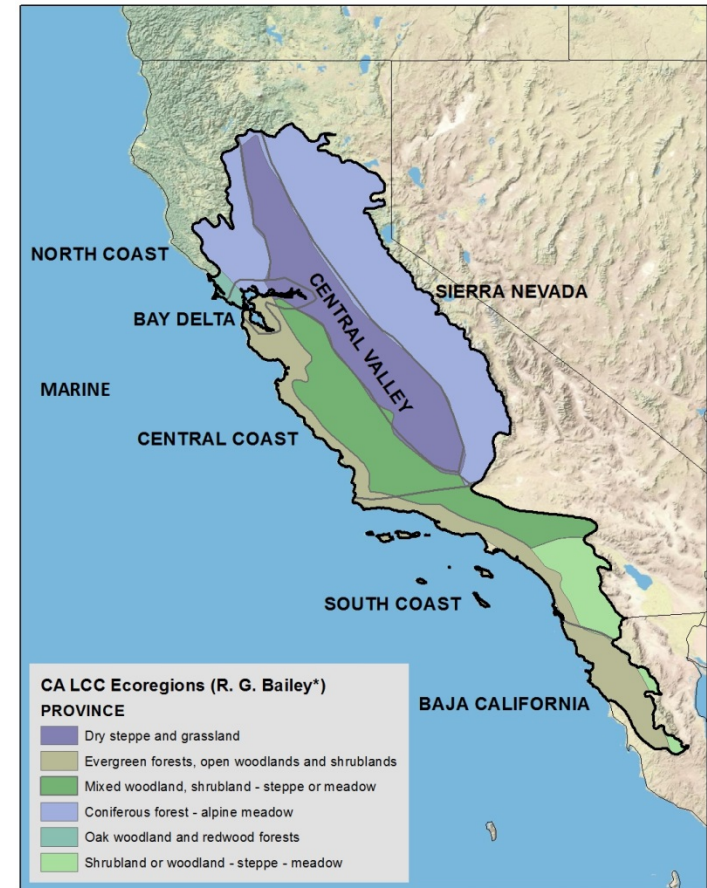




California Landscape Conservation Cooperative

CA LCC Mission

A management-science partnership created to inform and promote integrated science, natural resource management and conservation to address impacts of climate change and other stressors within and across ecosystems.

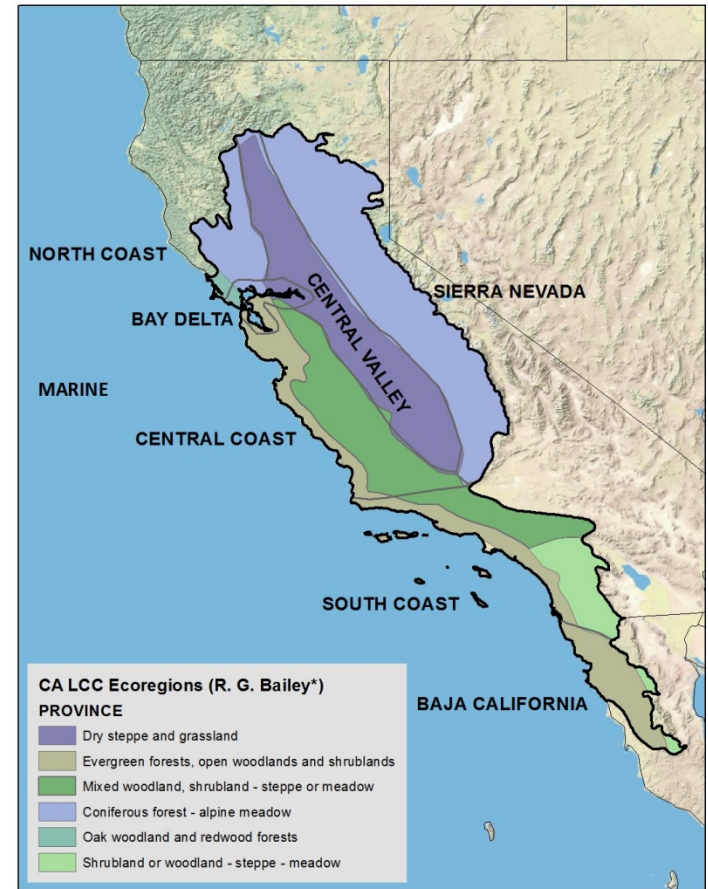




California Landscape Conservation Cooperative

CA LCC Principles

- ✓ Self-directed public-private partnerships that inform management actions
- ✓ Develop jointly established conservation goal & objectives
- ✓ Provide science and technology support on a landscape scale
- ✓ Links science with conservation delivery





California Landscape Conservation Cooperative

Steering Committee

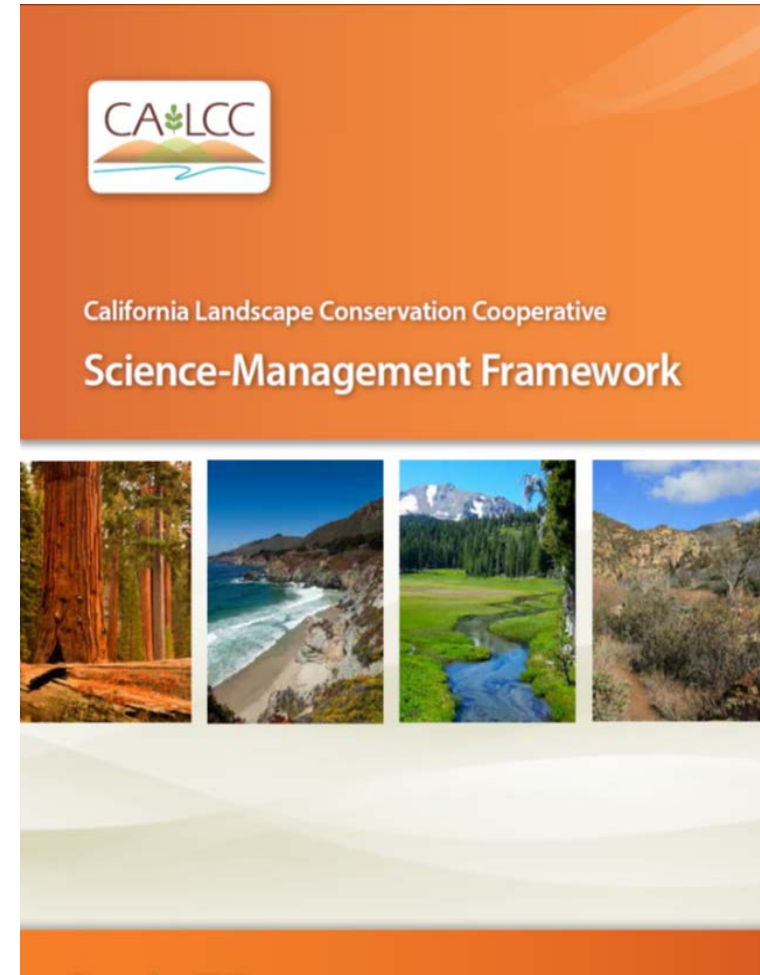




Science-Management Framework

Five year Objectives

1. Support place-based projects across the CA LCC ecoregions
2. Implement ecosystem processes projects at landscape scales
3. Develop landscape conservation designs across the ecoregions
4. Evaluate and adjust based on outcomes & lessons learned





Science-Management Framework

Five year Objectives

1. Support place-based projects across the CA LCC ecoregions
2. Implement ecosystem processes projects at landscape scales
3. **Develop landscape conservation designs across the ecoregions**
4. Evaluate and adjust based on outcomes & lessons learned



California Landscape Conservation Cooperative
Science-Management Framework



Central Valley Landscape Conservation Project

Support Staff

Debra Schlafmann, CA LCC Coordinator

Rebecca Fris, CA LCC Science Coordinator

Deanne DiPietro, CA LCC Data Manager

Zhahai Stewart, CA LCC Data Manager

Andrea Graffis, CA LCC Communications Coordinator

Dorian Fougères and Meagan Wylie, Center for
Collaborative Policy and Facilitators of this Project

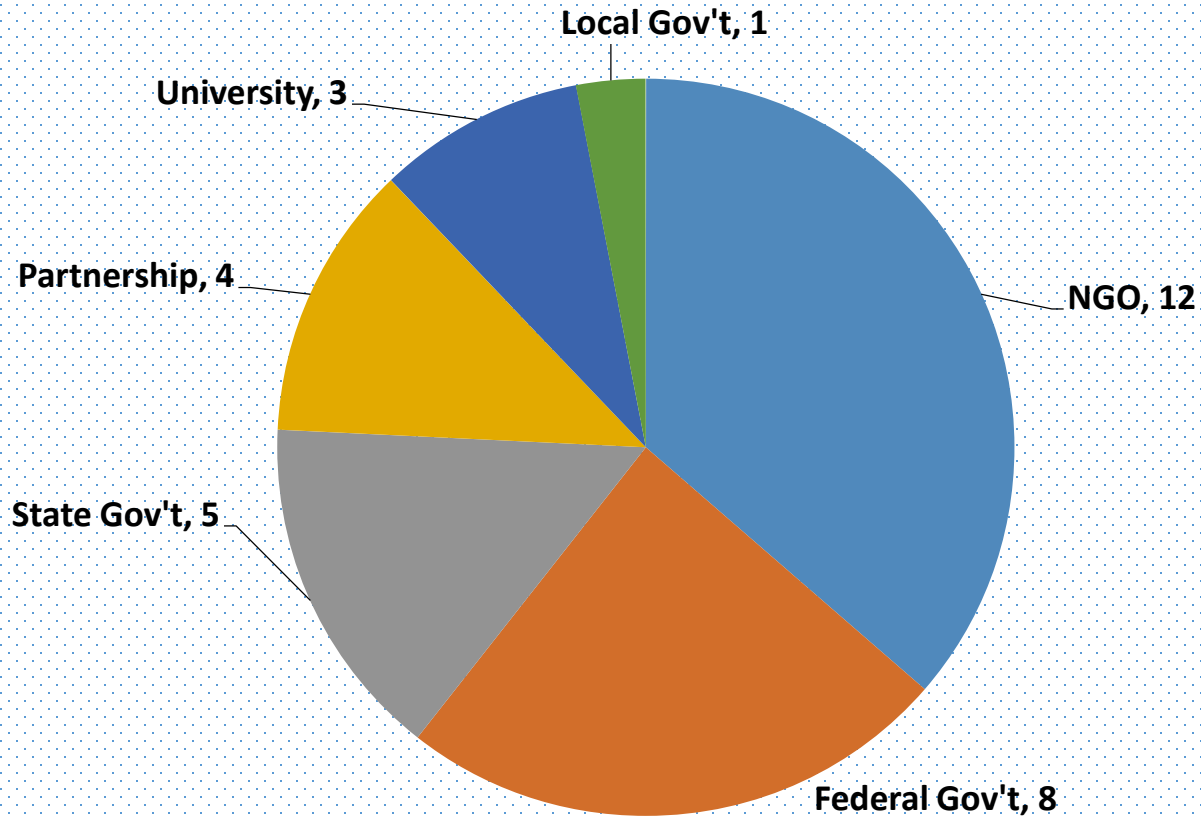


Organizations in Attendance

Federal Government	NGO
National Park Service	American Rivers
Natural Resource Conservation Service	Audubon California
US Bureau of Land Management	California Trout
US Bureau of Reclamation	Conservation Biology Institute
US Fish and Wildlife Service	Consultant
US Forest Service	Defenders of Wildlife
US Geological Survey	Environmental Defense Fund
USDA Climate Hub	Point Blue Conservation Science
	River Partners
	The Nature Conservancy
	Tulare Basin Wildlife Partners
	Vollmar Consulting
State Government	Partnership
CA Department of Fish and Wildlife	CA Fish Passage Forum
CA Department of Water Resources	CA Landscape Conservation Cooperative
CA State Parks	California Rangeland Conservation Coalition
CA Strategic Growth Council	Central Valley Joint Venture
CA Wildlife Conservation Board	Riparian Habitat Joint Venture
University	Local Government
Sac State - Center for Collaborative Policy	CA Assn. of Resource Conservation Districts
UC Stanislaus -Endangered Spp Recovery Prgm	
UC Davis	

Categories of Organizations in Attendance

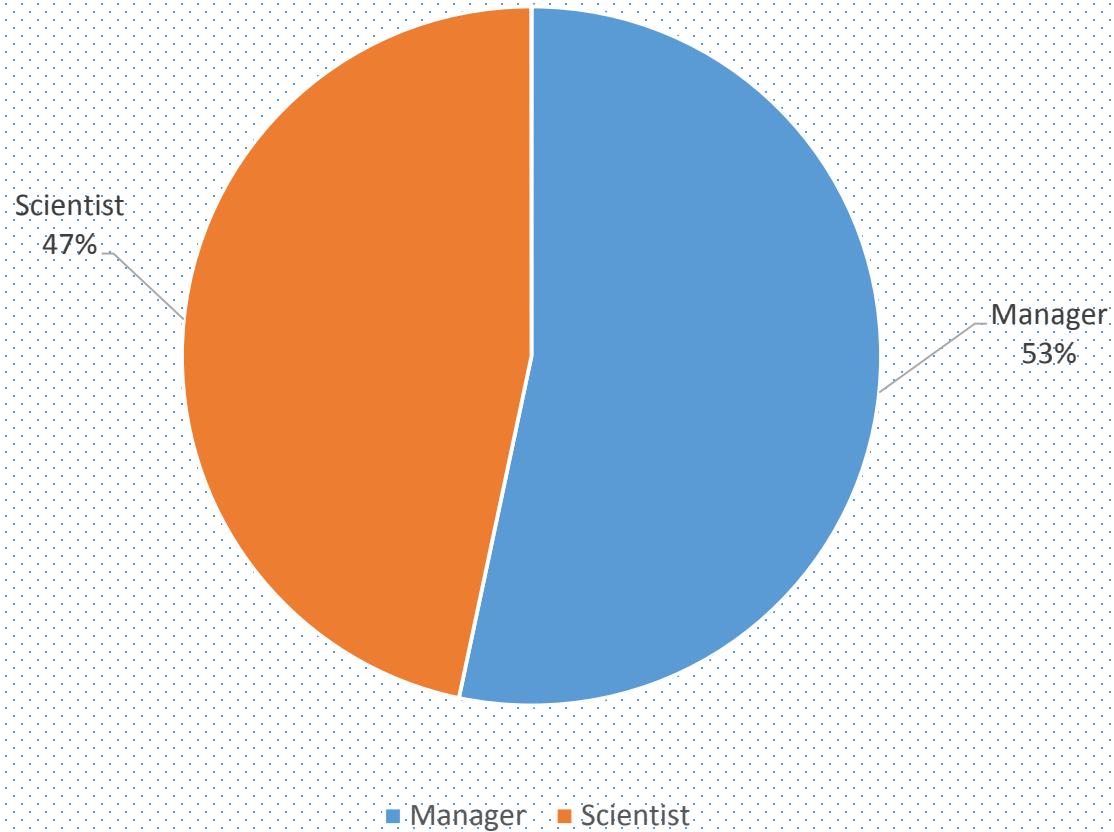
October 7, 2014



(Number indicates number of organizations in category, n=33)

Disciplines from Survey

Oct 7, 2014



(Number of responses, n=33)

Central Valley Landscape Conservation Project

Today's Goals

1. Review climate-smart process, define the project purpose, expected outcomes and deliverables
2. Review the projects organizational structure and work plan
3. Discuss and receive recommendations on how to make deliverables most useful

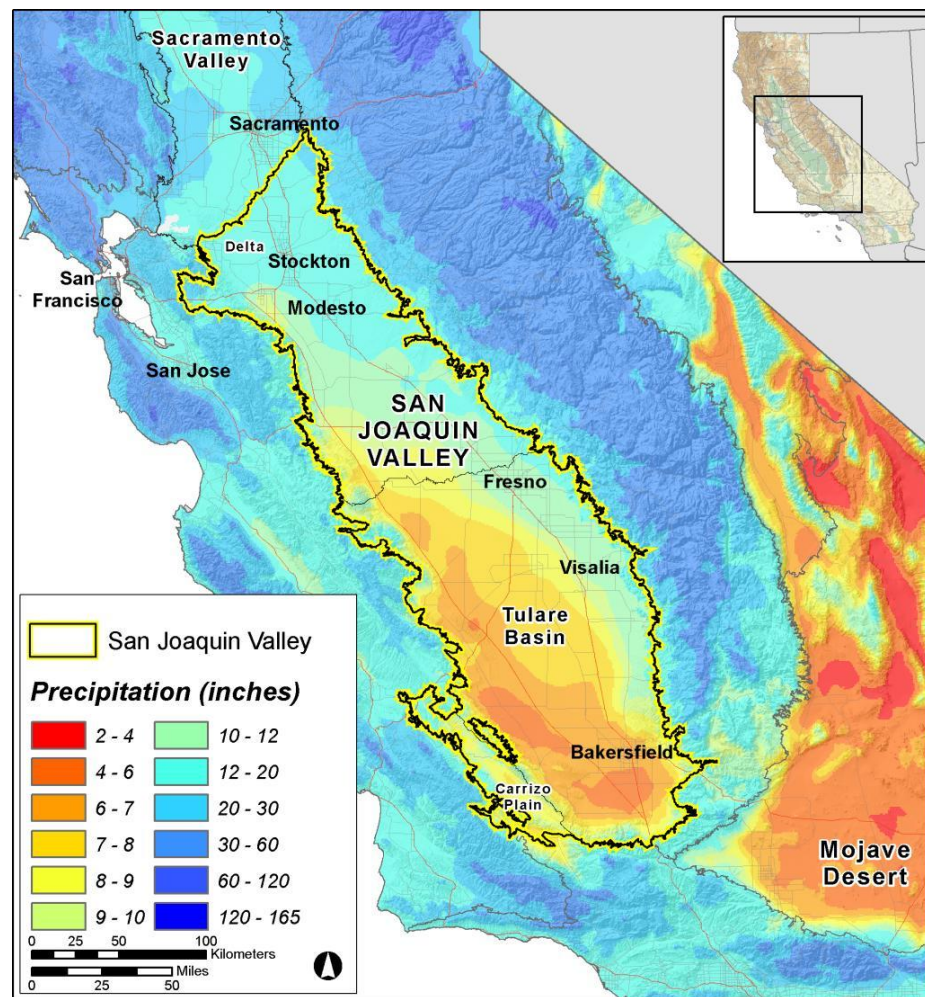


Climate Smart Adaptation



Central Valley Landscape Conservation Project

Assess resource vulnerability and develop adaptive management actions to address climate change impacts



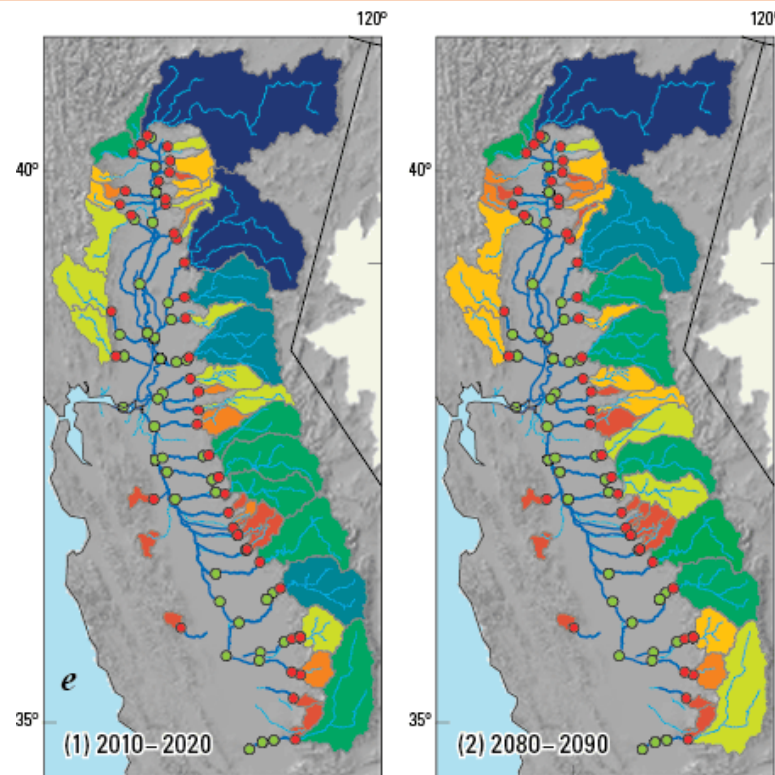
Climate Smart Adaptation



Central Valley Landscape Conservation Project

Principles:

- Future-focused
- Ecosystem context
- Adaptive and flexible
- Intentional, deliberate review of goals
- Manage for change, not persistence



Basin discharge, in millions of cubic meters



EXPLANATION

- Inflow locations
- Diversions
- Central Valley streams
- Watershed streams

Climate Smart Adaptation



Central Valley Landscape Conservation Project

Principles:

- Prioritized actions
- Partnership led
- Shared resources
 - Efficient
 - Greater progress
 - Avoid duplication
 - Synergies in actions



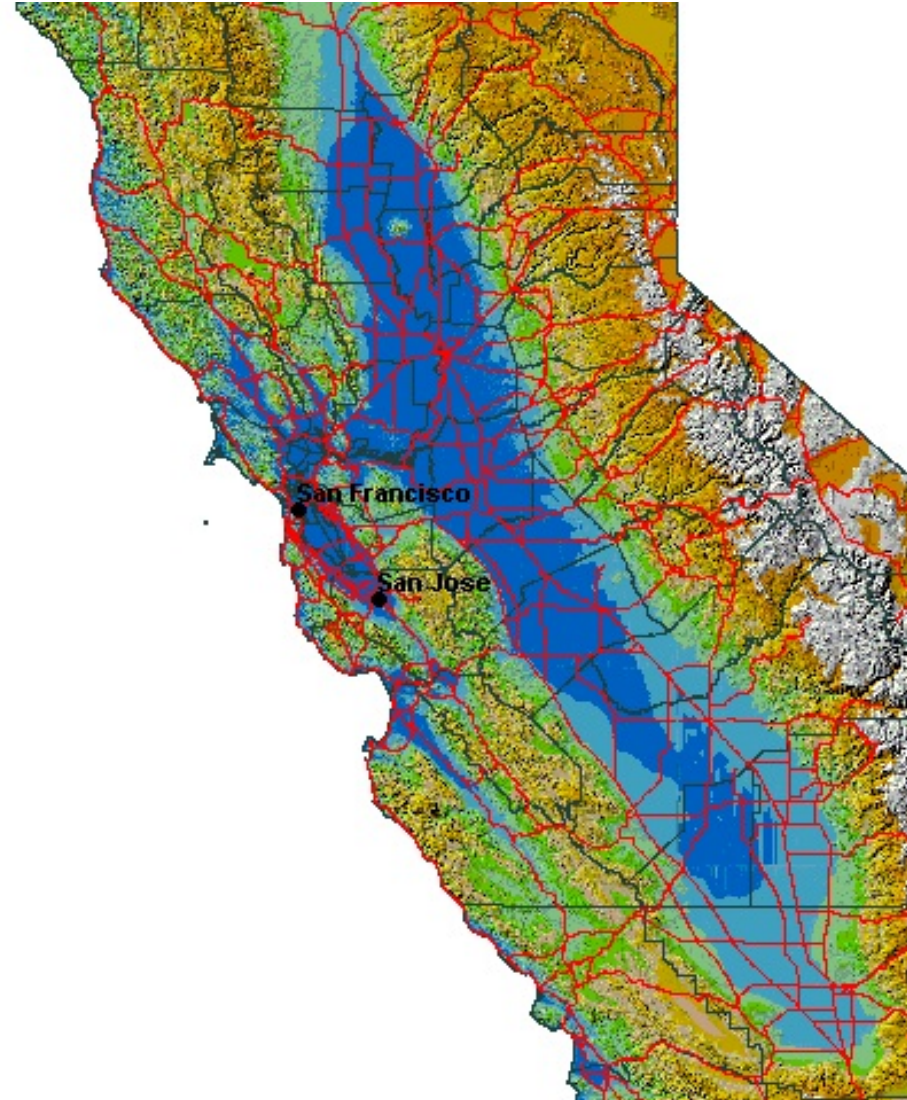
Why address climate change in the Central Valley ?



Central Valley Landscape Conservation Project

Attributes of the CV:

- Intense use of resources – many in conflict with each other
- CV expected to have greatest impact from climate change
- Strong set of existing partners
....that don't always work together

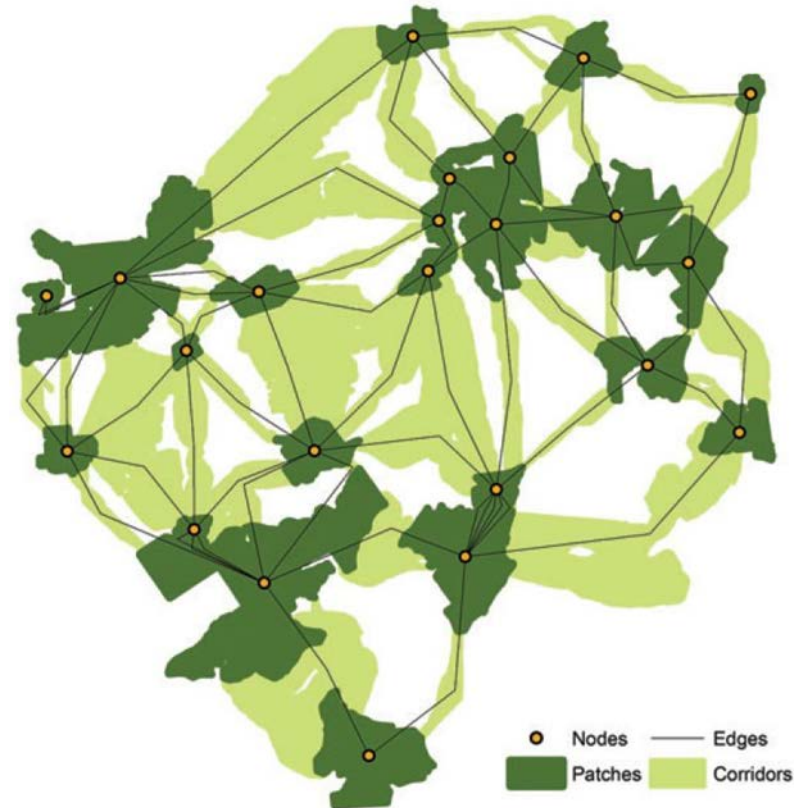


Project is Addressing

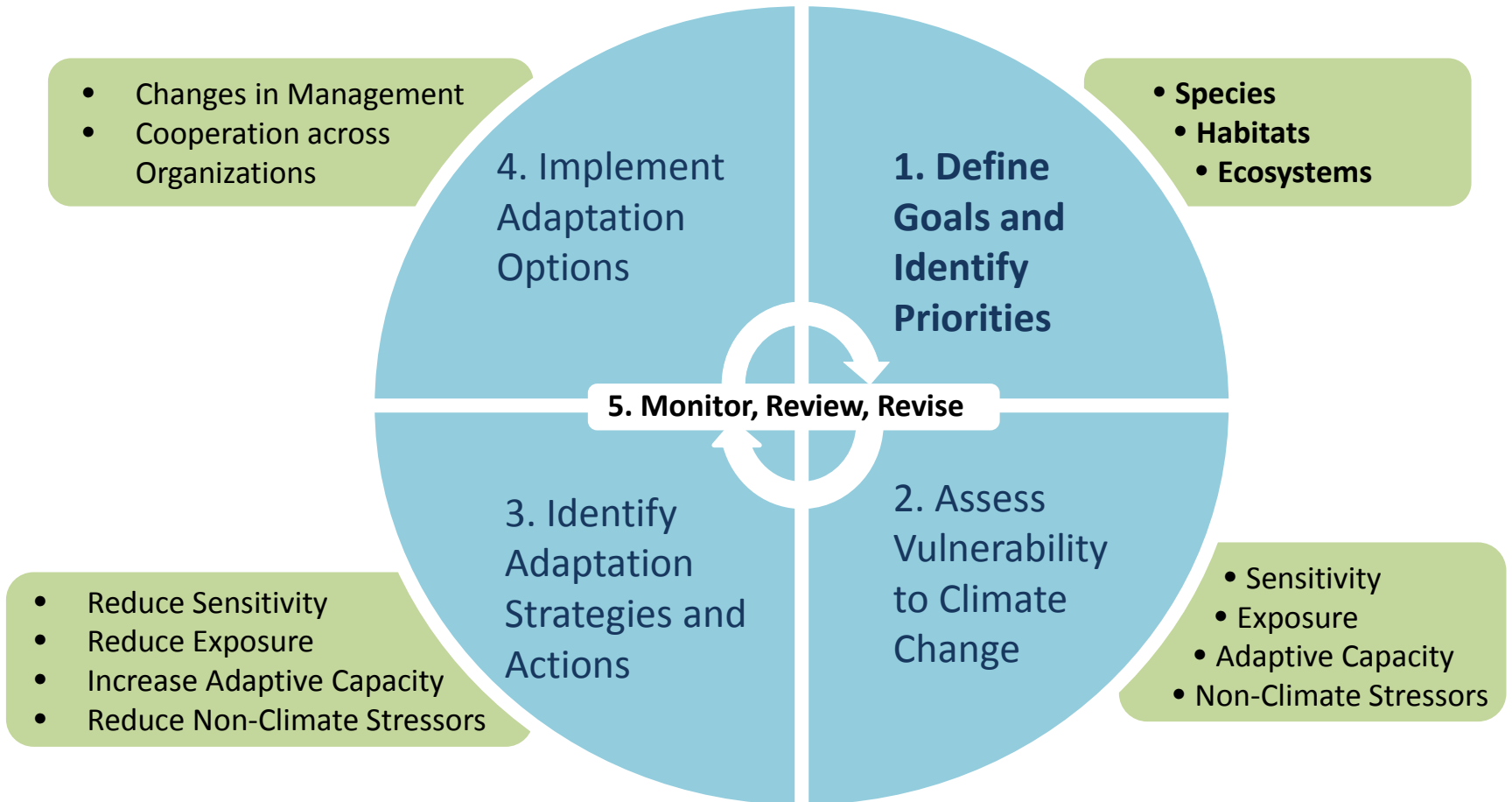


Central Valley Landscape Conservation Project

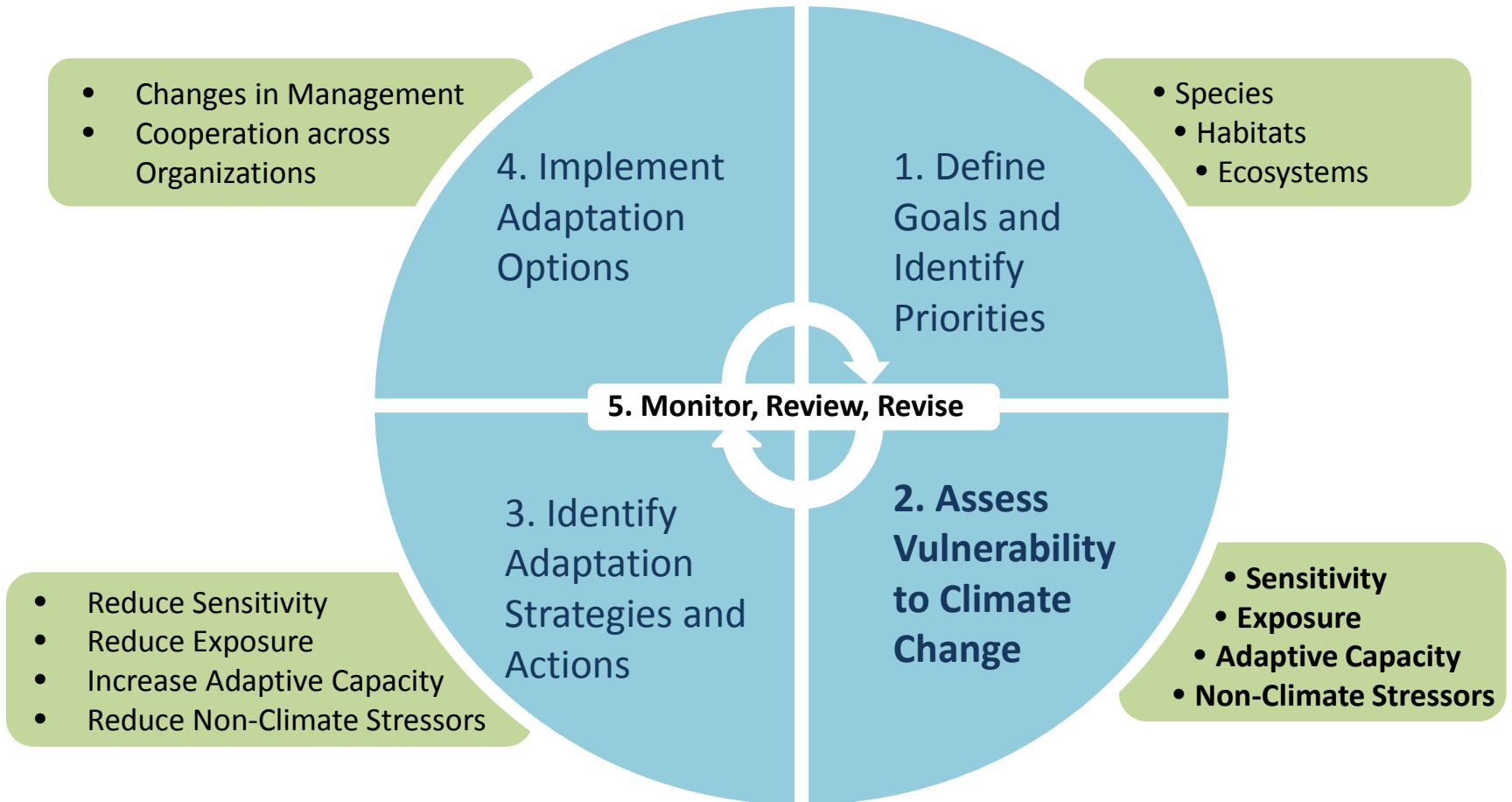
- How vulnerable to climate change are the species, habitats, and ecosystem that we manage?
[Vulnerability Assessment]
- What can we do to limit or reduce vulnerability?
[Adaptation Planning]



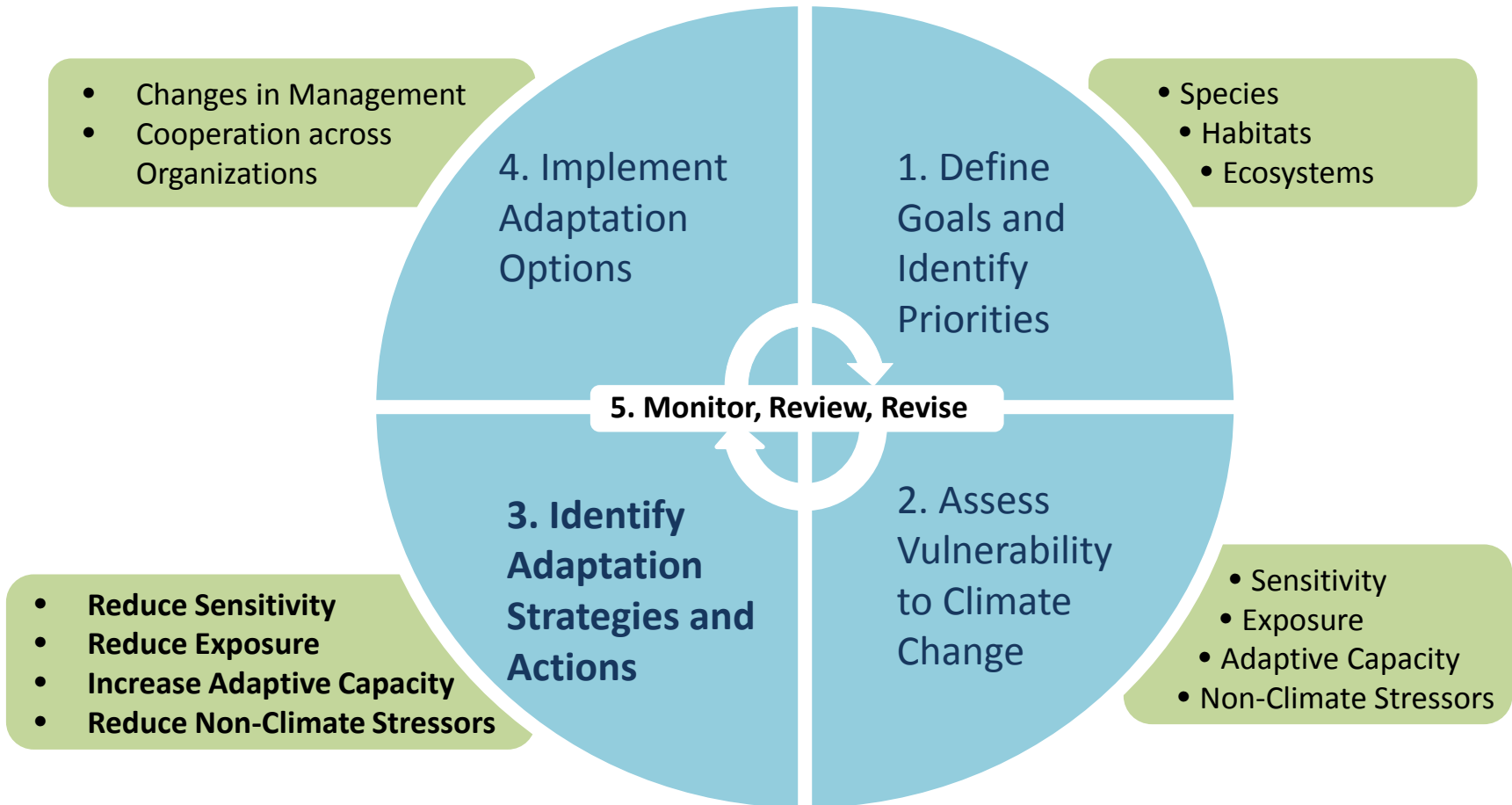
Iterative Climate-Smart Landscape Conservation Process



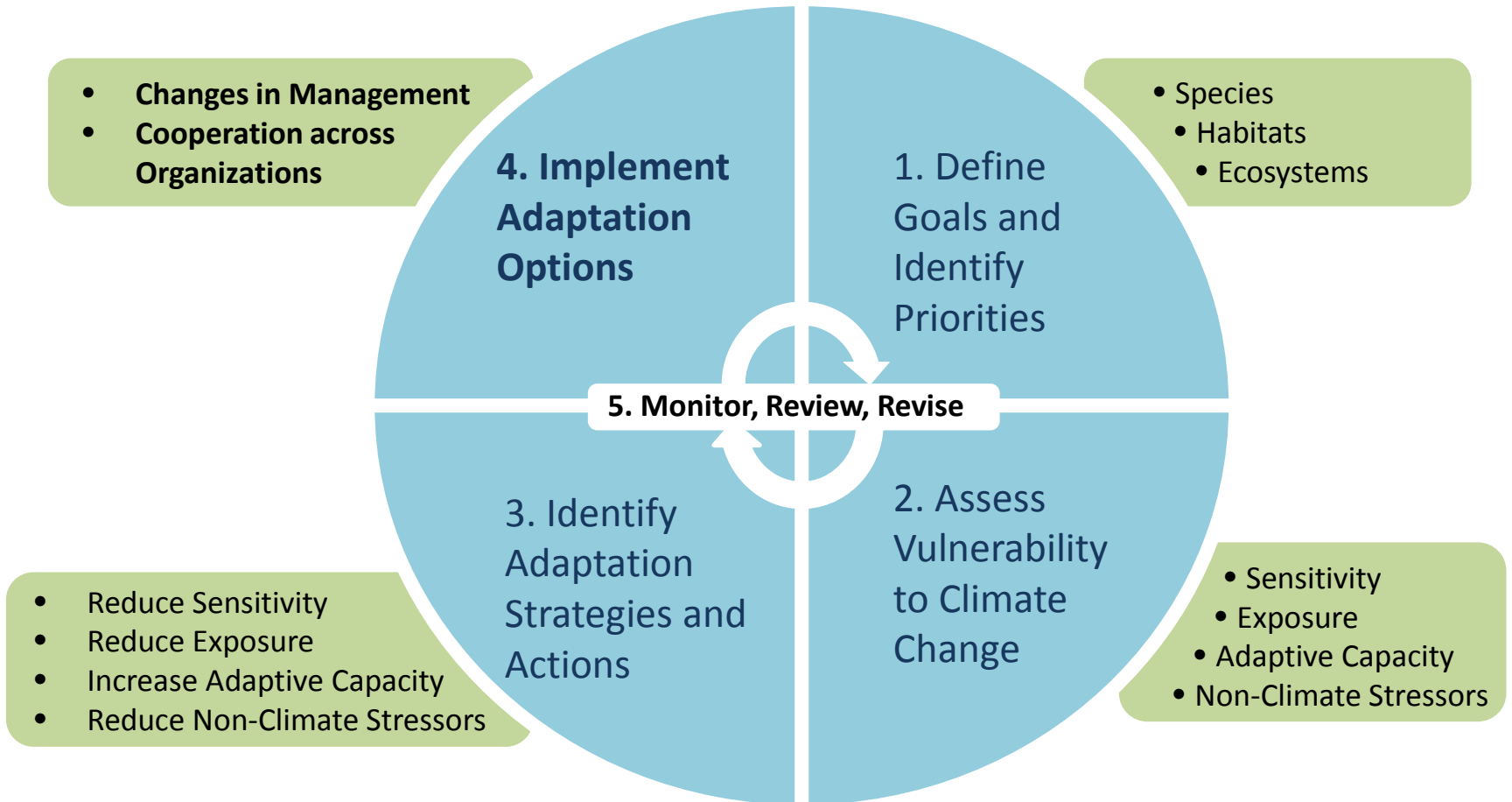
Iterative Climate-Smart Landscape Conservation Process



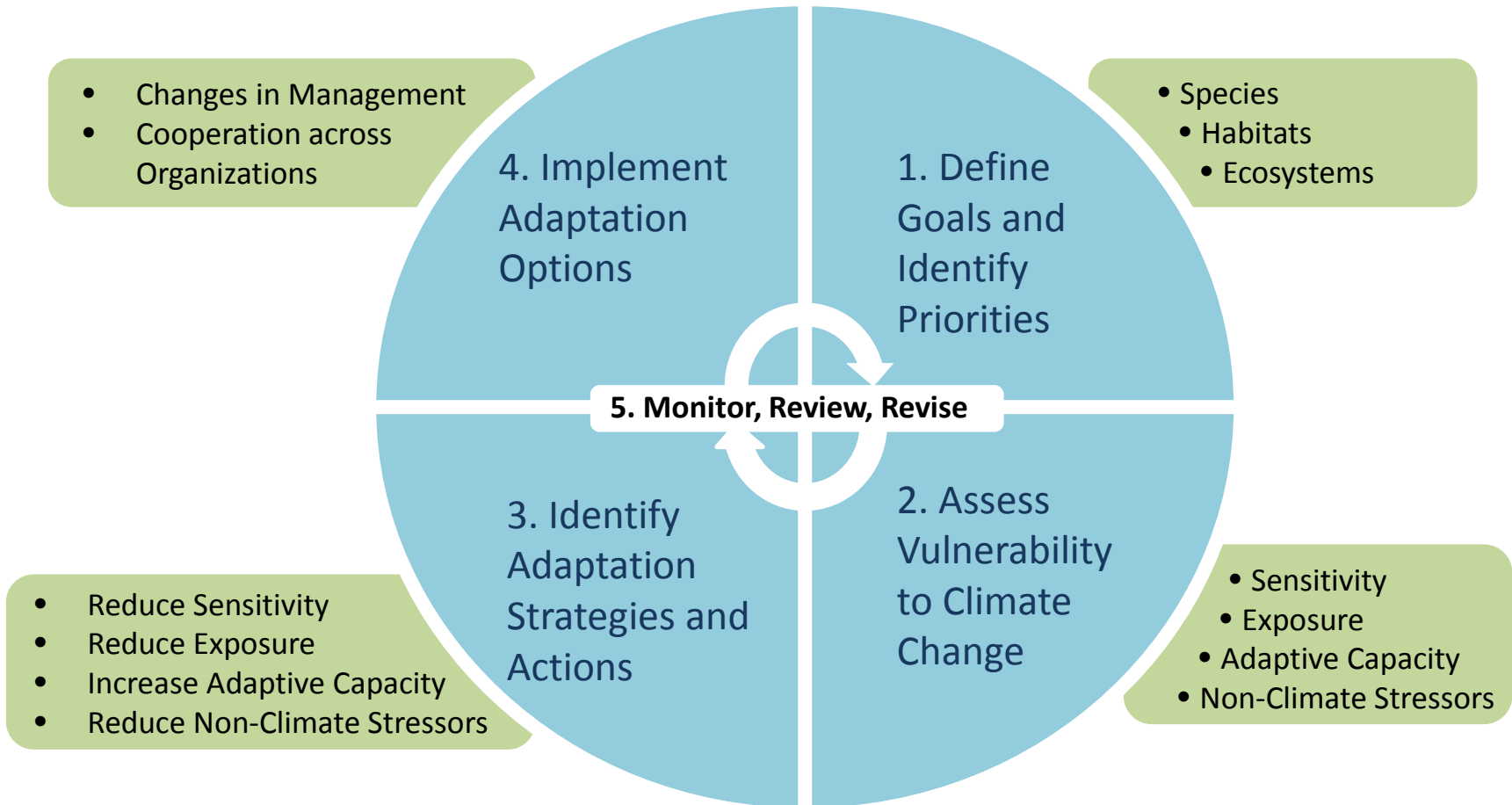
Iterative Climate-Smart Landscape Conservation Process



Iterative Climate-Smart Landscape Conservation Process



Iterative Climate-Smart Landscape Conservation Process



What this Project Does *Not* Do



- Duplicate existing efforts
- Implement defined strategies and actions
- Generate regulatory guidance



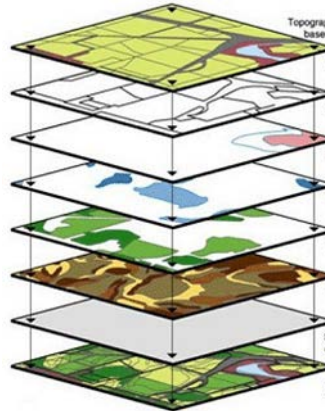
Expected Outcomes



Central Valley Landscape Conservation Project

Adaptation strategies will help us identify:

- Where do we invest in land protection, restoration?
- What are critical areas for connectivity?
- What type of resource management is necessary in face of climate change?



Products Developed



Central Valley Landscape Conservation Project

1. Climate-smart conservation objectives developed across a broad set of partners for priority resources.
2. An assessment of current and anticipated future natural resource conditions



Products Developed



Central Valley Landscape Conservation Project

3. A spatially explicit description of desired future natural resource conditions.
4. A set of adaptive strategies and actions for achieving those conditions.



Products Developed



Central Valley Landscape Conservation Project

5. Integrated data for the Central Valley and an online toolbox and outreach plan to help partners use and apply the adaptive strategies for their organization.



Products Developed



Central Valley Landscape Conservation Project

6. A “lessons learned” document to inform similar efforts within the CA LCC and other regions.

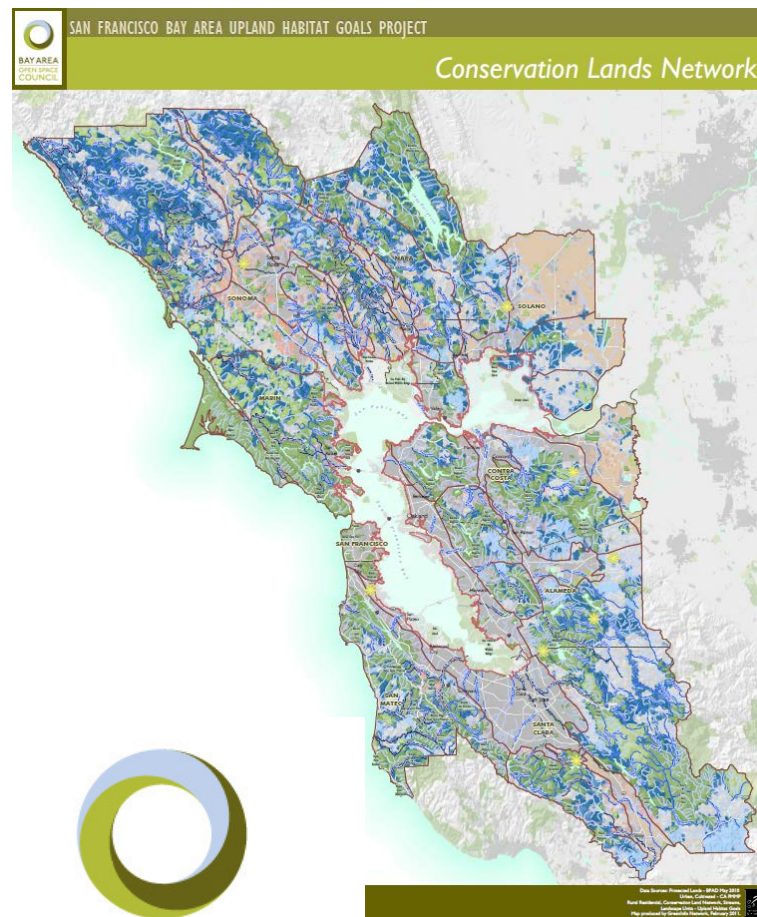


Conservation Lands Network



Examples of Similar Efforts

- **Purpose**
Identify the most essential lands needed to sustain biological diversity
- **Deliverables**
Decision support tool including:
 - ❖ Areas essential to conservation goals
 - ❖ Areas that are fragmented
 - ❖ Recommended conservation actions.



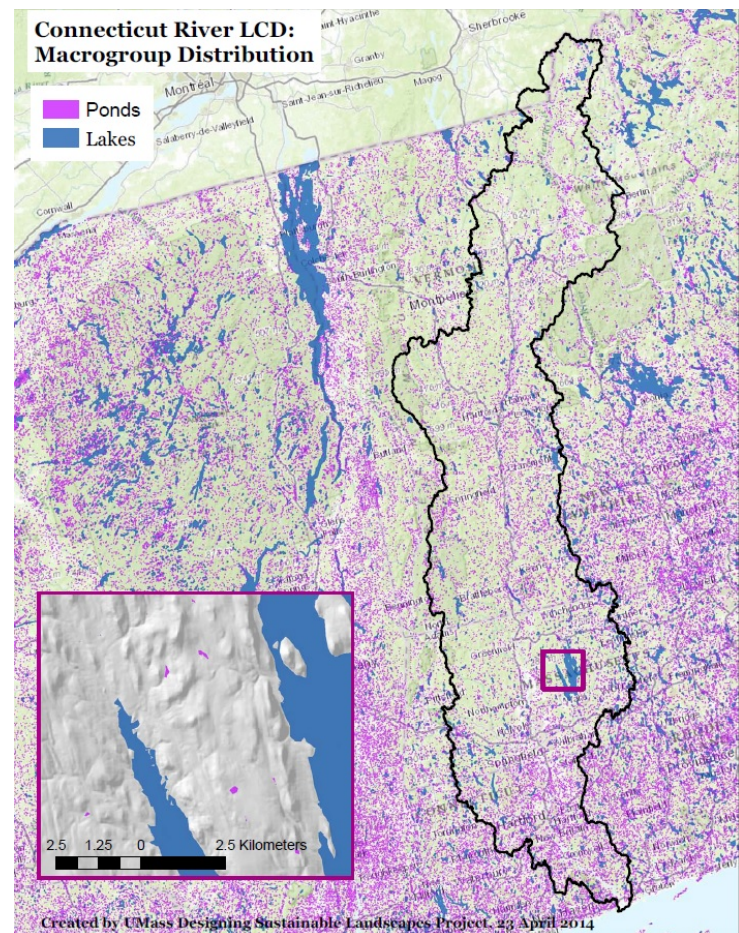
BAY AREA
OPEN SPACE COUNCIL

Connecticut River Watershed Pilot



North Atlantic Landscape Conservation Cooperative

- **Purpose**
Help partners set goals and objectives for species and translate those into projections of the amount, type and distribution of habitat needed
- **Deliverables**
Information, maps, and tools that show landscape conservation design options for prioritizing conservation actions



Columbia Plateau Conservation Blueprint



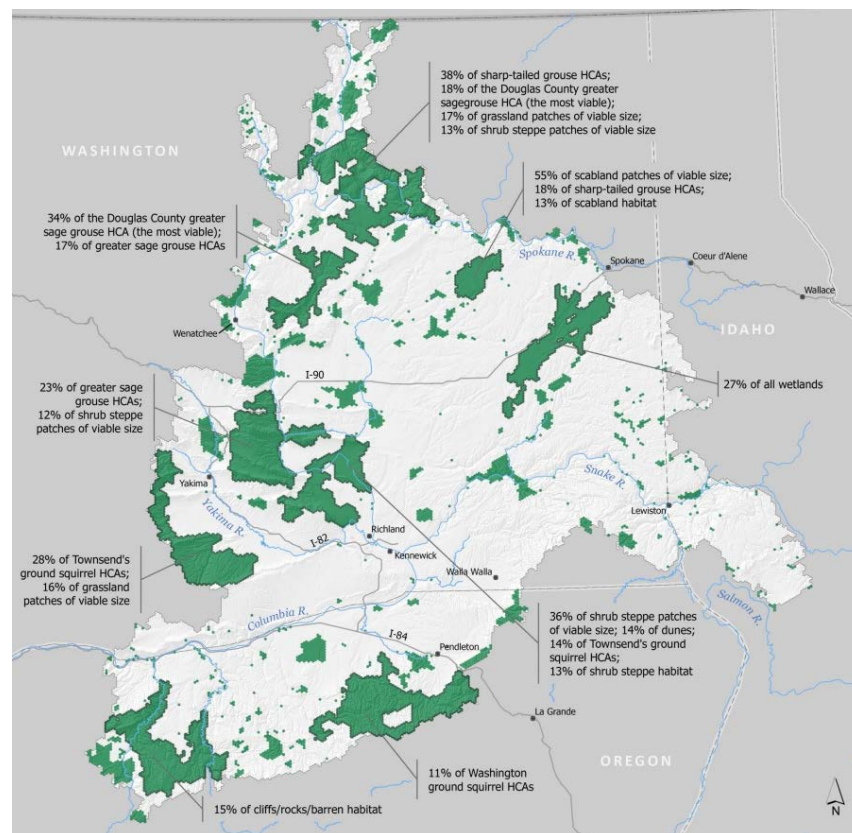
Great Northern LANDSCAPE CONSERVATION COOPERATIVE

- **Purpose**

Allow partners to work from a common blueprint for conservation actions and develop adaptation strategies

- **Deliverables**

- ❖ Synthesis of climate change knowledge
- ❖ Vulnerability assessment of priority resources
- ❖ Spatially explicit adaptation strategies



Example of Similar Efforts

Sierra Nevada Vulnerability Assessments and Adaptation Strategies

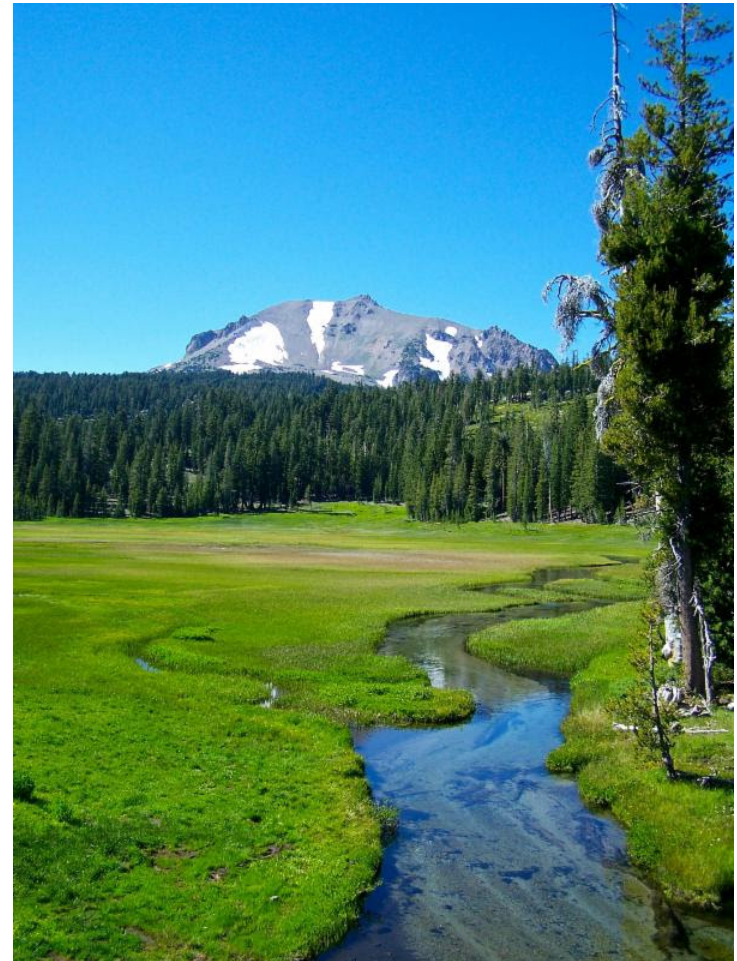


Example of Similar Efforts

CA LCC Project (2012-2014):

With 30+ partners:

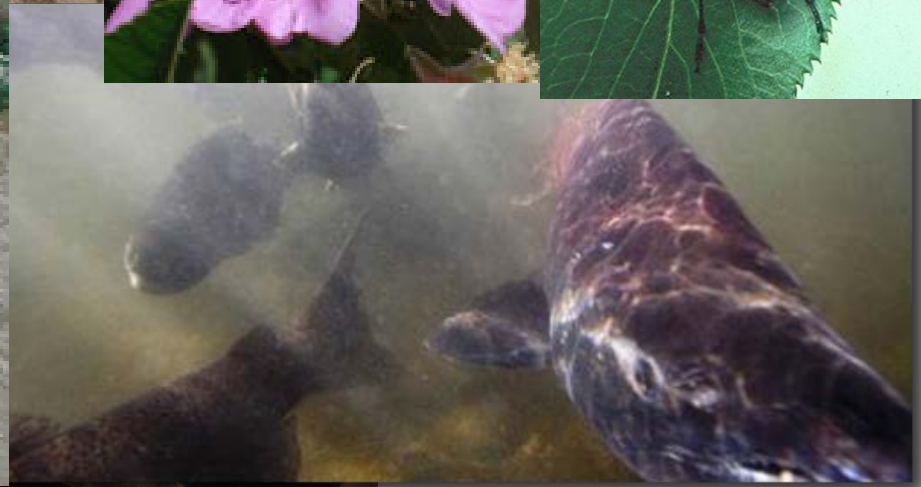
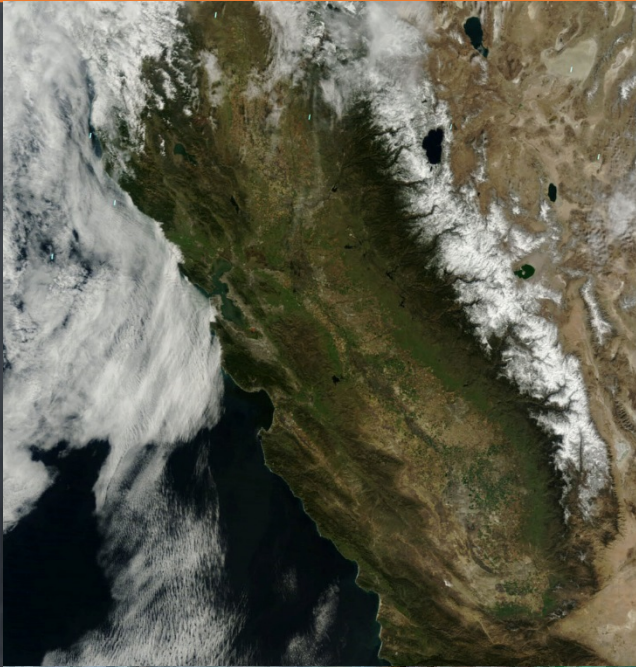
1. Identified focal resources (species, habitats and ecosystems) across the Sierra Nevada.
2. Conducted vulnerability assessments on focal species.
3. Developed strategies and implementable mgmt actions
4. Mapped areas most suitable to focus efforts



Questions ?



Central Valley Landscape Conservation Project

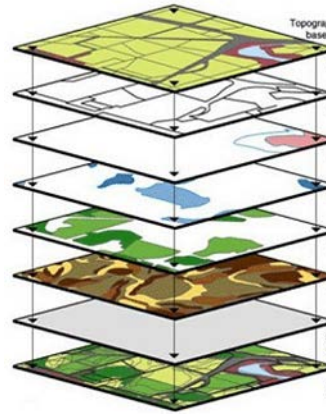


Next Steps



Central Valley Landscape Conservation Project

- Build project teams and schedule initial meetings
- Develop agreed to goals and objectives.
- Project inventory – *please provide us feedback!*
- Next workshop: Identify priority resources (Winter 2015)



Project Outline



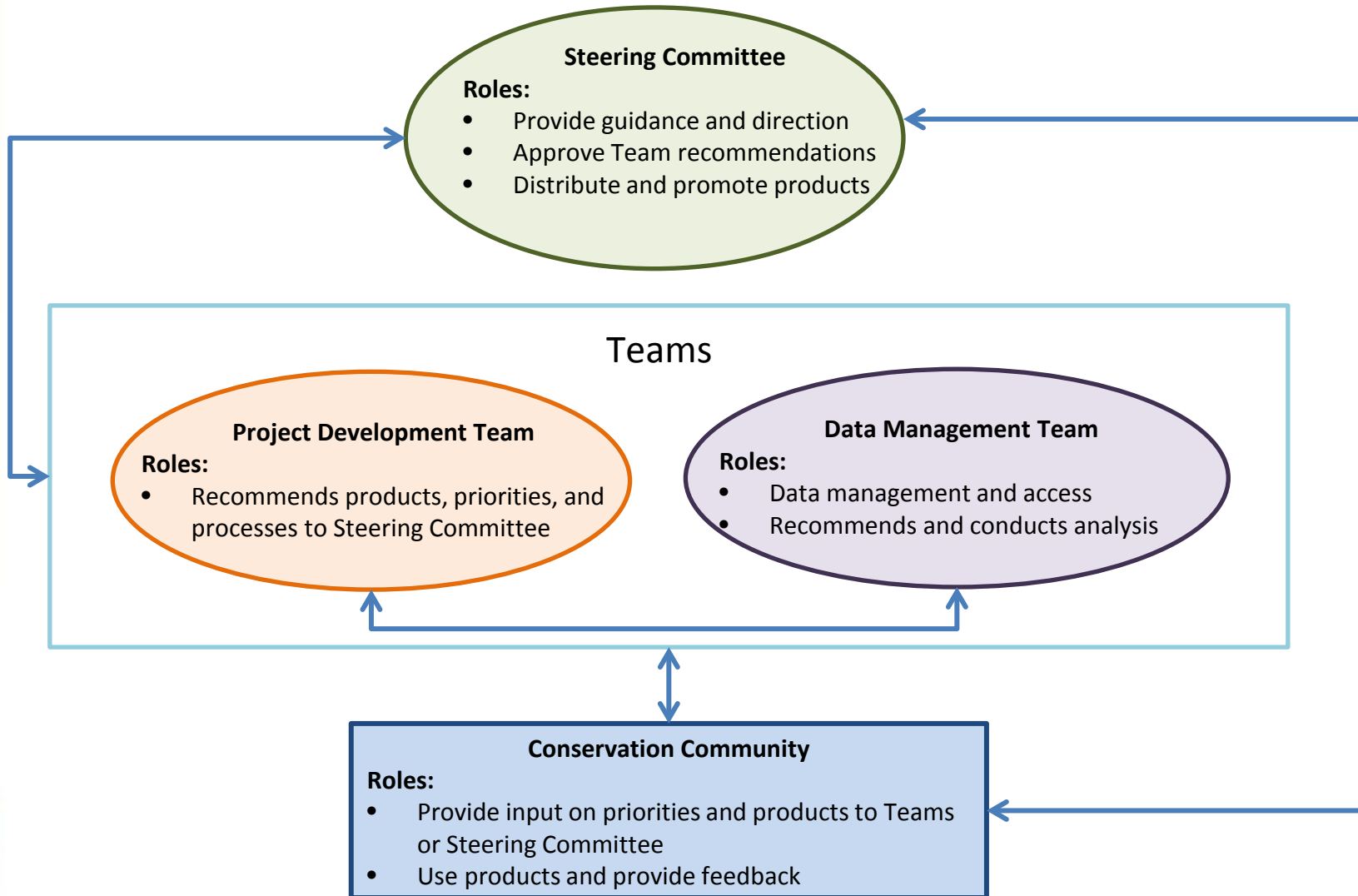
- Project Organizational Structure
- Work Plan
- Pre-workshop survey results



Organizational Chart



Central Valley Landscape Conservation Project



Two-Year Work Plan

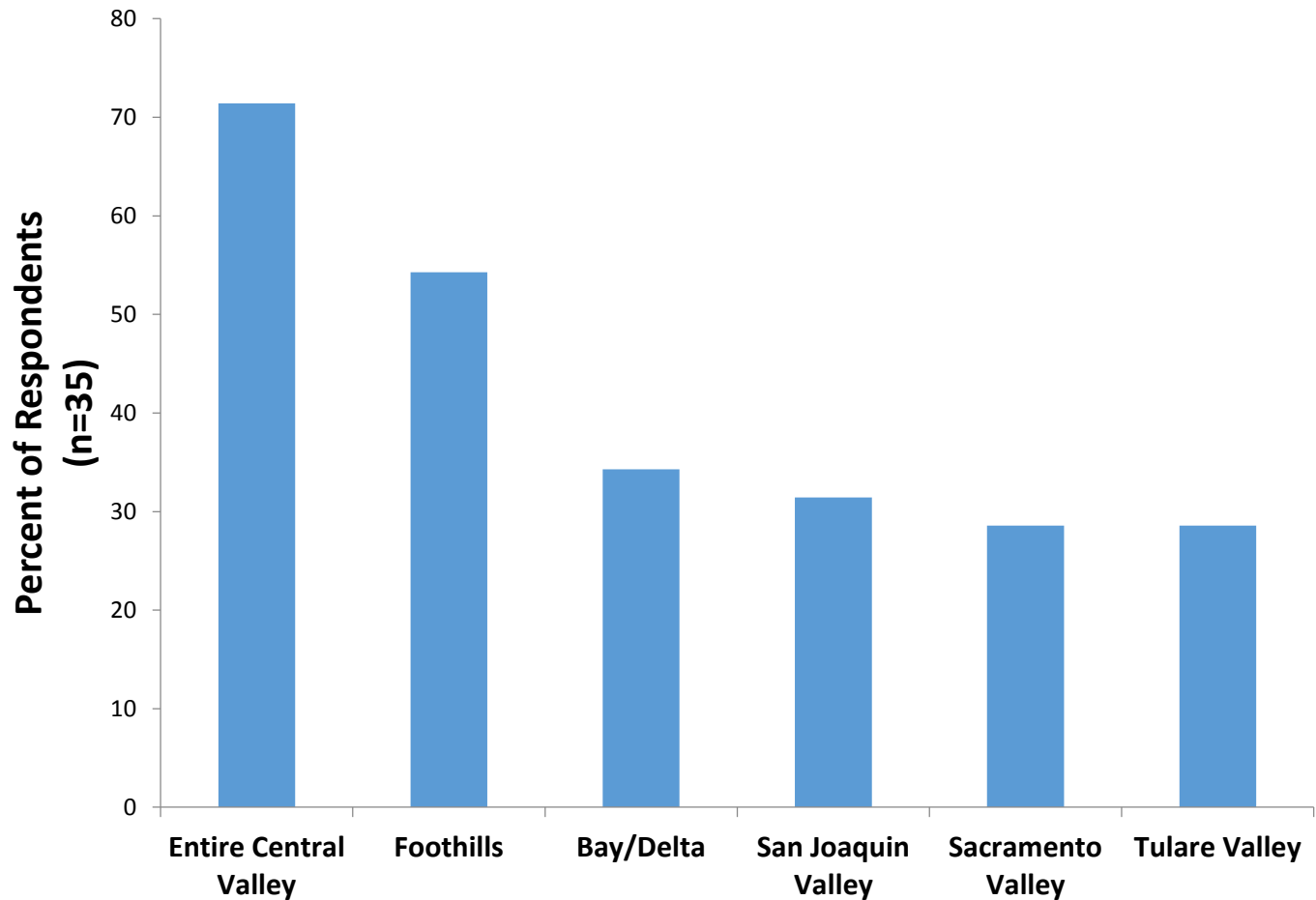


Survey Results

Where you work



Central Valley Landscape Conservation Project



Survey Results

What you focus on



- Adaptation &/or conservation planning (n=30)
- Habitat connectivity (n=29)
- Habitat restoration (n=26)
- Threatened and endangered species (n=25)
- Water availability for natural resources (n=25)



Survey Results

What you focus on

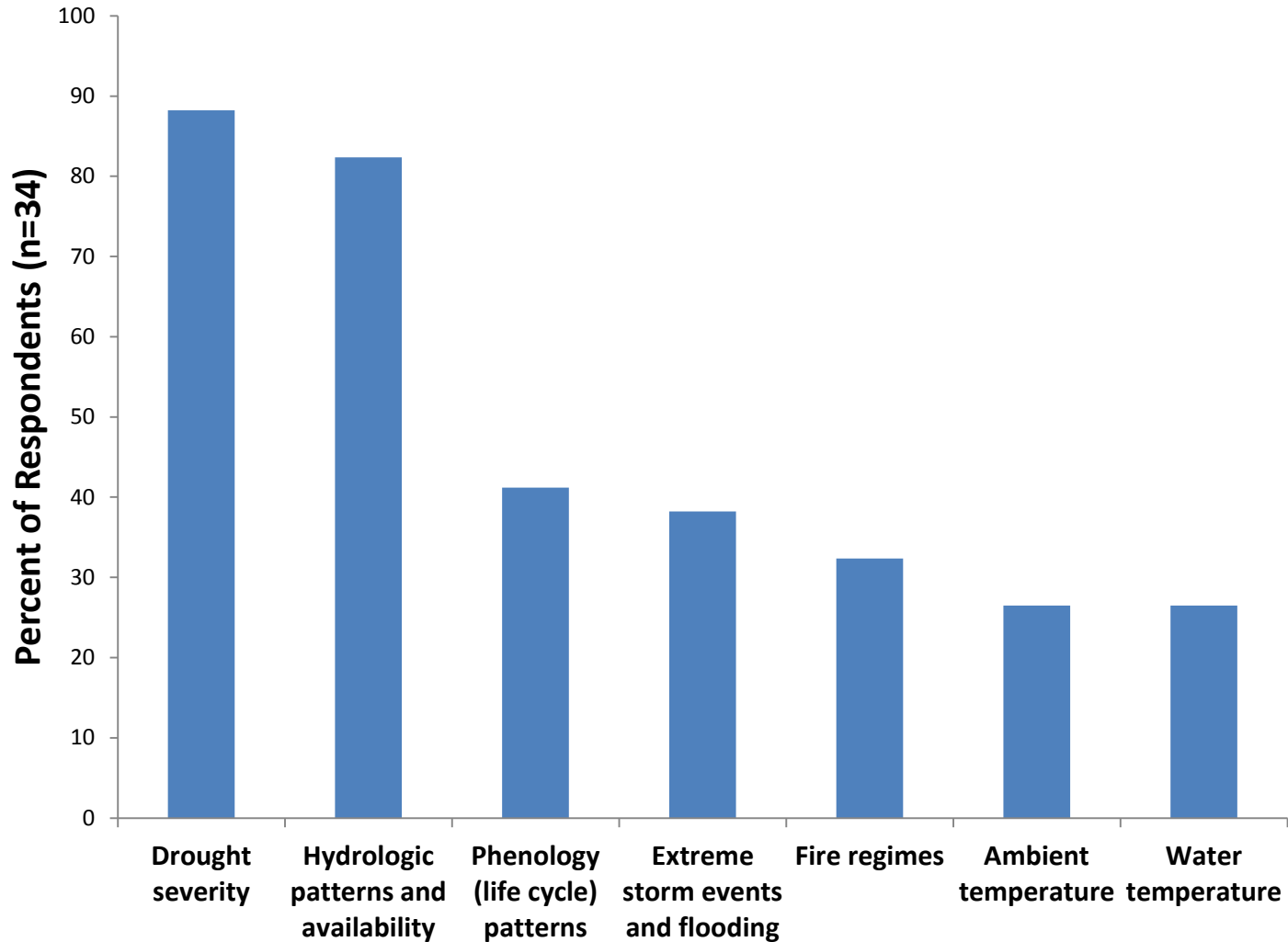


- Riparian areas (n=24)
- Migratory birds (n=23)
- Seasonal wetlands (n=21)
- Agriculture or rangeland sustainability (n=19)
- Natural resource policy (n=15)



Survey Results

Major climate impacts

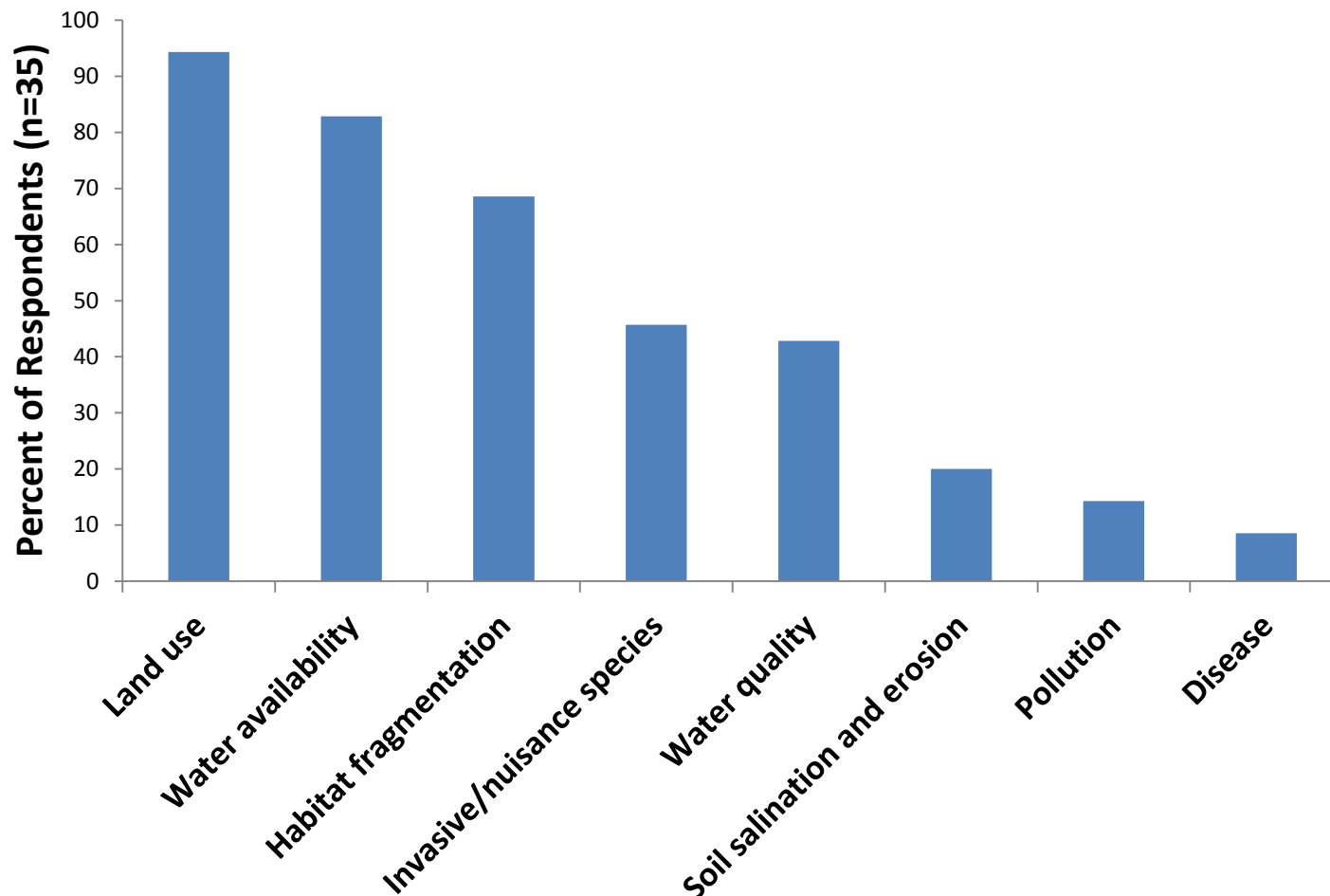


Survey Results

Major non-climate stressors

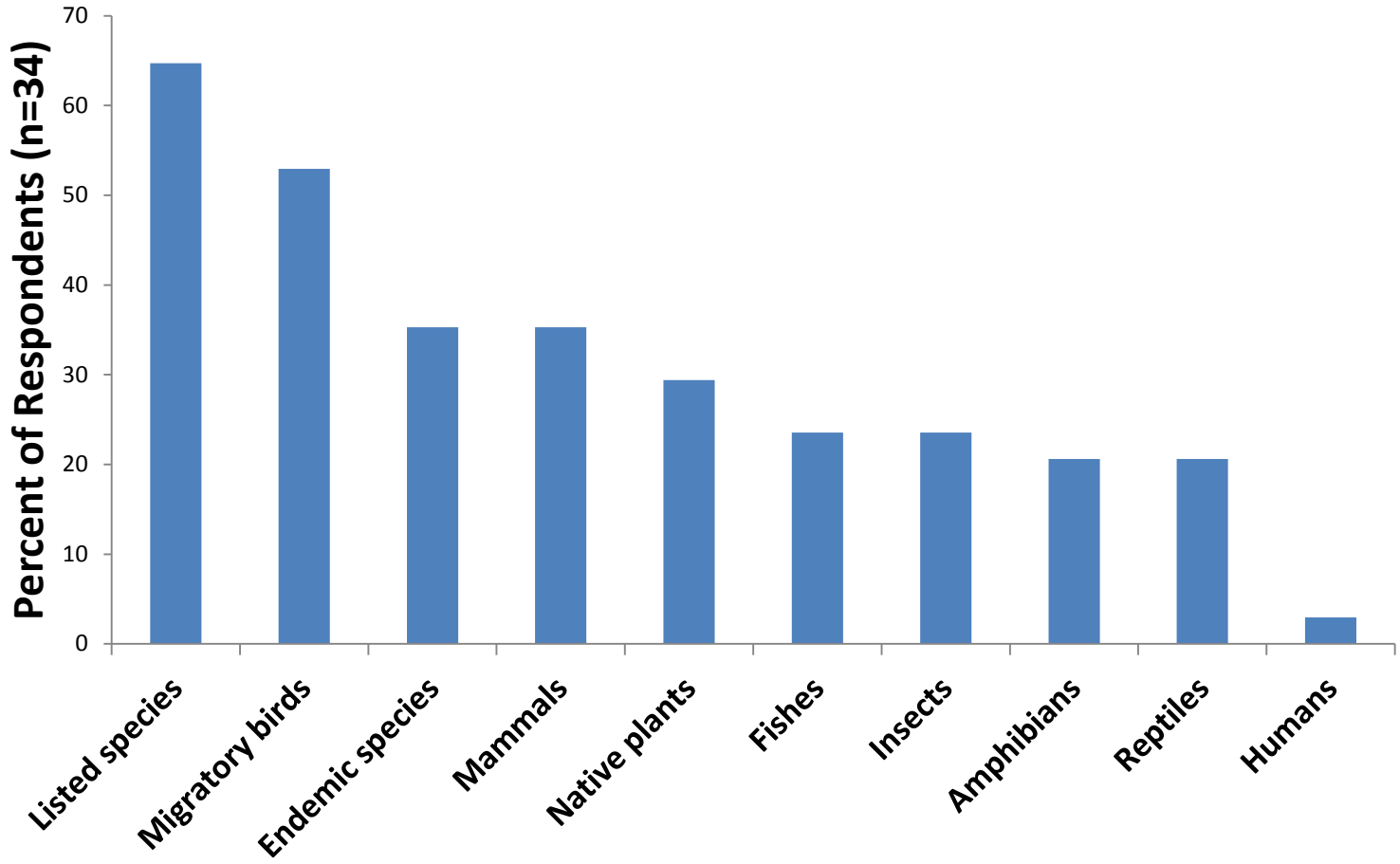


Central Valley Landscape Conservation Project



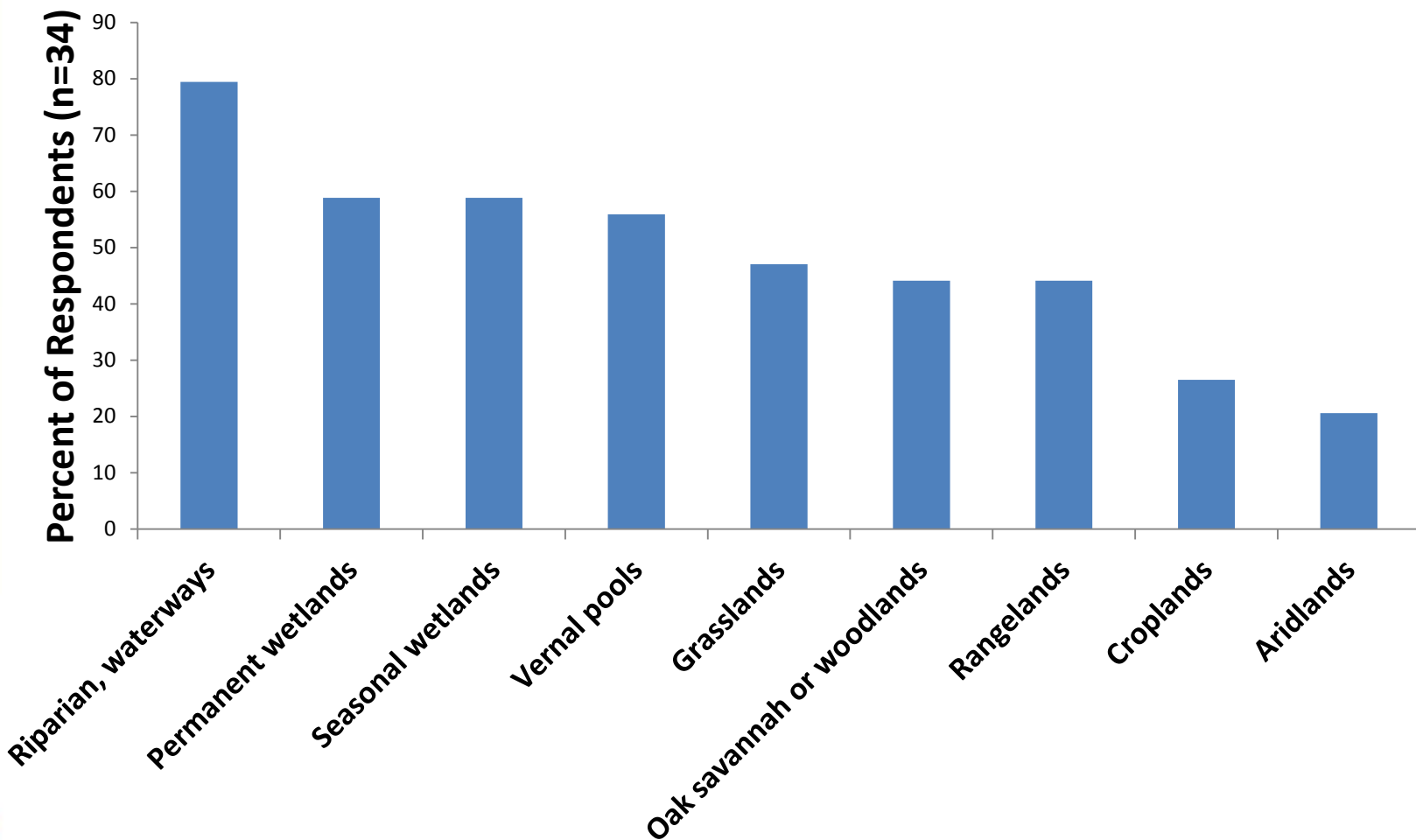
Survey Results

Highest Priority Species



Survey Results

Highest Priority Habitats



Survey Results

Information you want



Central Valley Landscape Conservation Project

- Landscape scale adaptation strategies in the Central Valley (n=27)
- Climate information to incorporate into existing planning processes (n=24)
- Maps depicting priority areas for adaptation actions (n=24)



Survey Results

Information you want



Central Valley Landscape Conservation Project

- Ecosystem services analysis (or other economic information) (n=18)
- Vulnerability assessments of focal resources (n=17)
- Tailored decision support tools (n=17)
- Site specific adaptation strategies (n=16)



Questions ?



Central Valley Landscape Conservation Project

